



## Kina quality check, 5 Mar 2022

All kina collected were thin!

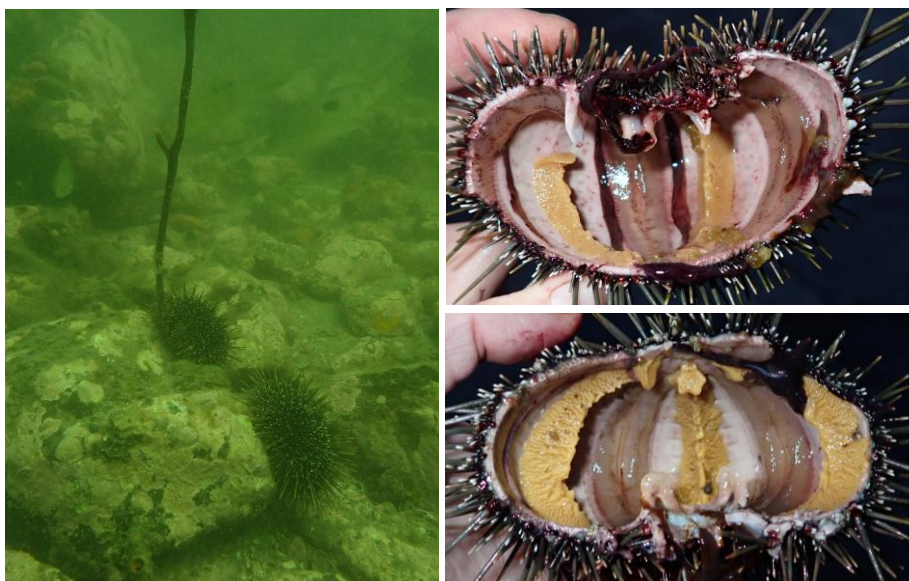
We collected 10 kina at each site randomly. The largest 4 kina from each site were sampled, kina from kelp areas were all tasty (keepers), from the 4 sampled kina collected outside kelp areas one or two were bitter (discarded).



Kau Point sampling map 5 Mar 2022



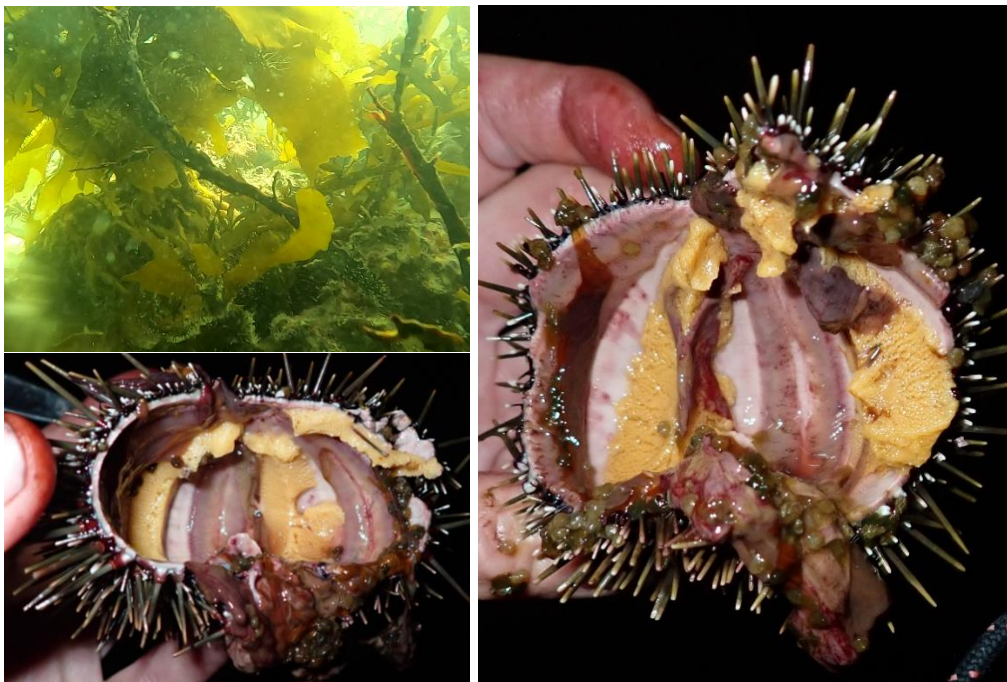
Site and samples: Bag 1, 6.7m, sand, no kelp



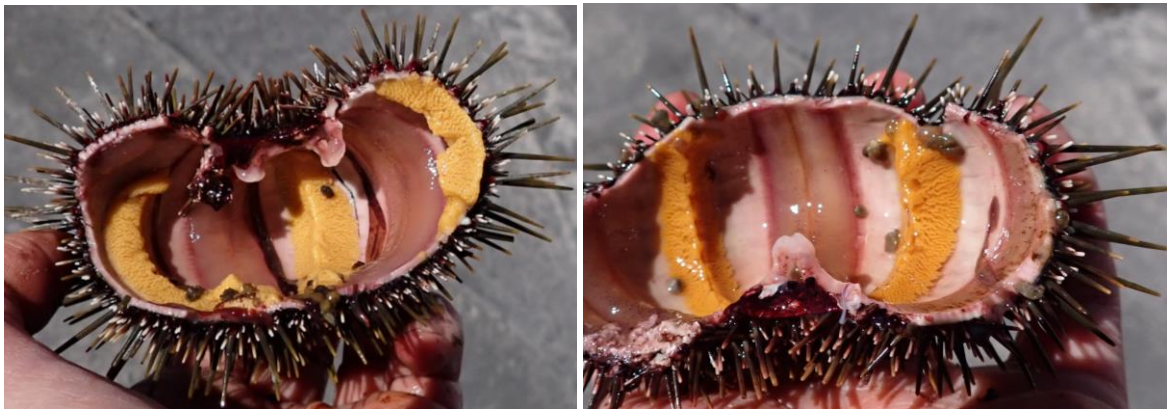
Site and samples: Bag 2, 4.4m, rock, barren



Site and samples: Bag 3, 3.4m, rocky, little seaweed



Site and samples: Bag 4, 2.2m, kelp



Site and samples: Bag 5, 3.2m, kelp

Tables: Sampling results Site 1-5

Bag: 1		Site:	Sand, no kelp						
		Depth:	6.7m						
kina	size [cm]	weight [g]	roe weight [g]	roe weight %	shell weight [g]	shell weight %	color & taste	note	
1	9.5	271	9	3	126	46	brown, rubbery	discarded	
2	9.1	267	15	6	111	42	pale orange/greyish, sweet	kept	
3	9.0	231	16	7	101	44	pale orange/greyish, bitter	discarded	
4	9.0	230	8	3	101	44	pale orange/greyish, sweet	kept	
5	8.4	198							
6	8.1	193							
7	7.7	171							
8	7.0	114							
9	6.6	78							
10	6.5	104							

Bag: 2		Site:	Rocky, barren						
		Depth:	4.4m						
kina	size [cm]	weight [g]	roe weight [g]	roe weight %	shell weight [g]	shell weight %	color & taste	note	
1	9.7	307	5	2	139	45	orange/bit darker, sweet light bitter	kept	
2	9.1	211	5	2	91	43	pale orange, bitter	discarded	
3	8.9	218	7	3	112	51	orange, uni tiny bitter	kept	
4	8.6	237	8	3	113	48	orange, sweet	kept	
5	7.9	151							
6	7.5	147							
7	7.4	141							
8	6.7	89							
9	6.5	96							
10	6.0	76							

Bag: 3		Site:	Rocky, little seaweed						
		Depth:	3.4m						
kina	size [cm]	weight [g]	roe weight [g]	roe weight %	shell weight [g]	shell weight %	color & taste	note	
1	8.0	161	8	5	77	48	orange, sweet/bitter	discarded	
2	8.0	174	8	5	87	50	orange, sweet light bitter	kept	
3	7.9	152	5	3	74	49	orange, sweet	kept	
4	7.8	158	8	5	73	46	orange, sweet	kept	
5	7.0	140							
6	7.0	124							
7	7.0	129							
8	6.4	88							
9	6.1	81							
10	5.8	58							

Bag: 4		Site:	Kelp						
		Depth:	2.2m						
kina	size [cm]	weight [g]	roe weight [g]	roe weight %	shell weight [g]	shell weight %	color & taste	note	
1	8.0	215	8	4			dark orange, sweet	kept	
2	8.0	191	10	5	92	48	orange, sweet	kept	
3	6.9	121	5	4			orange, uni	kept	
4	6.7	126	5	4	64	51	light orange, sweet	kept	
5	6.7	102							
6	6.7	106							
7	6.4	84							
8	6.1	82							
9	5.8	77							
10	5.5	51							

Bag: 5		Site:	Kelp						
		Depth:	3.2m						
kina	size [cm]	weight [g]	roe weight [g]	roe weight %	shell weight [g]	shell weight %	color & taste	note	
							pale orange		
1	8.9	224	7	3	107	48	brownish, sweet	kept	
2	8.8	228	8	4	98	43	dark orange, sweet	kept	
3	8.6	221	8	4	96	43	dark orange, sweet	kept	
4	8.2	189	8	4	90	48	dark orange, sweet	kept	
5	8.1	161	7	4	83	52	dark orange, uni	kept	
6	8.0	177	6	3	80	45	dark orange, sweet	kept	
7	7.9	179	8	4	89	50	dark orange, sweet	kept	
8	7.4	162	7	4	82	51	dark orange, bitter	discarded	
9	7.3	141	5	4	67	48	dark orange, sweet	kept	
10	5.2	48	<1		28	58	light, not tasted	kept	